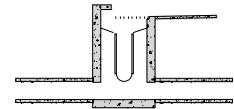
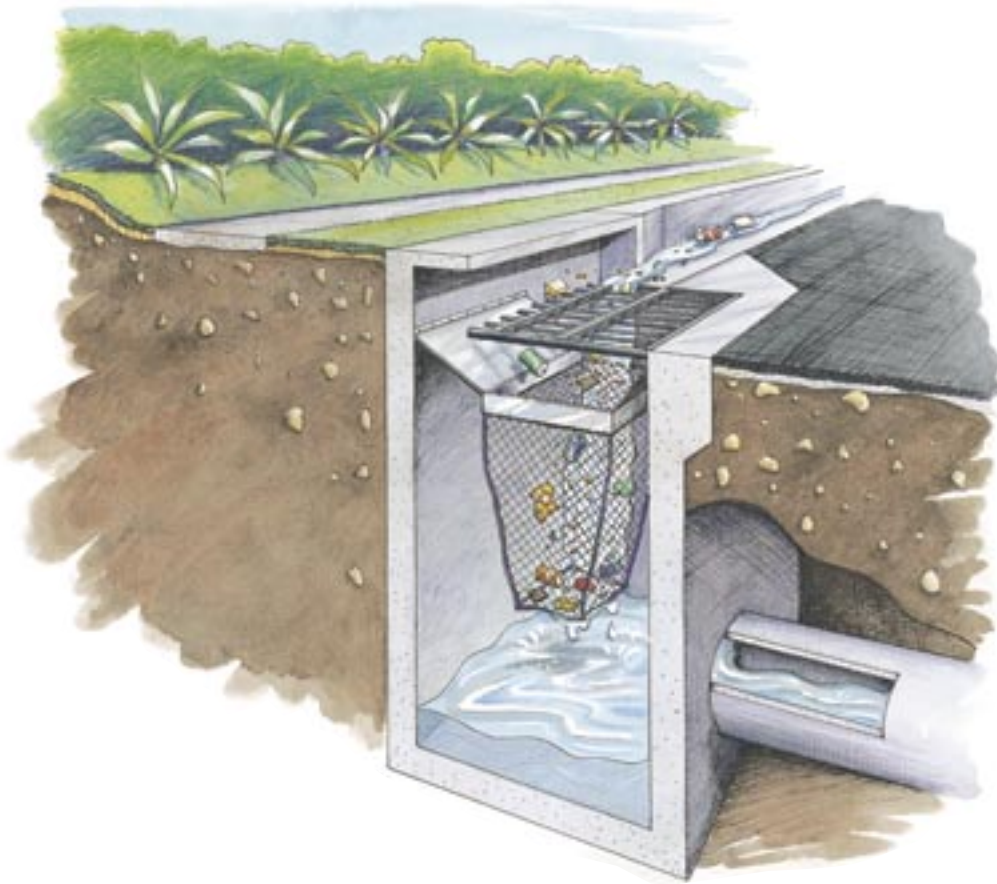
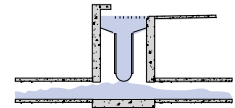


Ecosol™ RSF 100

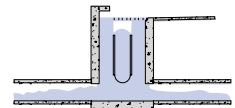
At-Source Solid Pollutant Filter



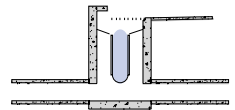
RSF 100 before the rain event



Pollutants are filtered from the flow



Overflow mechanism is activated



Flow ceases and flaps return to closed position

KEY FEATURES

Effective Pollutant and Litter Retention

- ✓ Captures more than 94% of solid pollutants > 200µm
- ✓ Collects more than 65% of total suspended solids
- ✓ Filter media available to suit a range of sediment sizes
- ✓ No remobilisation of captured pollutants
- ✓ Dry storage of pollutants and no toxic fermentation

Tested and Proven Fail-Safe Overflow System

- ✓ Patented by-pass overflow eliminates the risk of flooding
- ✓ Minimal head/hydraulic loss
- ✓ Does not affect the stormwater inlet capacity
- ✓ Independently tested at a NATA-approved facility
- ✓ Meets international guidelines and standards

Cost-Effective Maintenance

- ✓ Easily cleaned by most street-sweeping vehicles
- ✓ Filter liner can be removed easily for manual cleaning
- ✓ Pollutants are not handled during cleaning
- ✓ Easy access to pit for drain maintenance
- ✓ Reduces sedimentation build-up & pipeline maintenance
- ✓ Maintenance procedures within OH&S guidelines

Cost-Effective Design and Installation

- ✓ Simple design with corrosive-resistant materials
- ✓ Can be retro-fitted into existing pits or supplied in its own pit
- ✓ Safe installation procedures minimise public risk
- ✓ Cost-effective alternative to a GPT
- ✓ Visually unobtrusive
- ✓ Excellent aid for community awareness & public education

Ecosol™ RSF 100

At-Source Solid Pollutant Filter

The **RSF 100** Solid Pollutant Filter captures pollutants at drainage entry points and consists of a capture basket and an overflow by-pass flap(s). The basket is fitted below the invert of the gutter and inside the drainage pit and, importantly, does not obstruct flow in the outlet pipe.

Solid pollutants enter the **RSF 100** with the stormwater from roadside or other run-off areas, such as car parks. The incoming flow, and the pollutants aquaplane across the flap(s) into the capture basket. The filtered stormwater then passes into the drainage network without any head/hydraulic loss through the unit.

As the basket approaches 90% full, the by-pass flap(s) begins to open in response to the incoming flow. Once the basket is 100% full the pressure of

the incoming flow forces open the by-pass flap(s), allowing the excess flow, to enter the drainage system through the by-pass openings. This effectively eliminates the likelihood of flooding, a common fault with other at-source systems. Even when in by-pass, the captured pollutants are not remobilised and are retained in the capture basket.

When the flow ceases, the flap(s) returns to its normal position. In the unlikely event that the spring mechanism fails, or debris lodges in the by-pass flap(s), it will be in the open position and will not obstruct the flow or cause flooding.

The **RSF 100** separates, collects, and retains more than 95% of solid pollutants greater than 1.5mm in size, 94% of solids greater than 200µm, and 65% of total suspended solids.

PERFORMANCE SPECIFICATIONS

POLLUTANTS	POLLUTANT REMOVAL EFFICIENCY	DESCRIPTION
Gross Pollutants	95.0%	Anthropogenic materials such as cans, bottles, plastic bags, and packing materials (generally > 1.5mm in diameter)
Vegetation	up to 94.0%	Organic material, such as leaves and grass clippings (generally >200µm)
Sediment	94.0%	Solid materials > 200µm, both mineral and organic
	65.0%	Solid materials > 100µm, both mineral and organic
	53.0%	Solid materials > 50µm, both mineral and organic
Total Suspended Solids (TSS)	65.0%	Fine inorganic solids suspended in water
Total Phosphorous (TP)	40.0%	Total phosphorous in suspended solids and organic materials
Total Nitrogen (TN)	21.0%	Total nitrogen in organic and inorganic forms
Hydrocarbons	up to 20.0%	Free floating oils that do not emulsify in aqueous solutions

PIT TYPE	TYPICAL PIT INTERNAL DIMENSIONS (L x W) mm	POLLUTANT HOLDING CAPACITY AT BASKET DEPTH ²		TREATABLE FLOW RATE ³	BY-PASS CAPACITY m ³ /s	STATIC HEAD FOR BY-PASS mm
		450mm m ³	600mm m ³			
Single Grated With Kerb Lintel	900 x 750	0.16	0.23	100%	0.215	150
Double Grated With Kerb Lintel	1800 x 750	0.32	0.46	100%	0.430	150
Single Without Grate or Lintel ¹	900 x 600	0.11	0.16	100%	0.110	150
Double Without Grate or Lintel ¹	1800 x 600	0.22	0.32	100%	0.220	150

^{1,2,3} Retro-fitted unit only - for more details please refer to the product technical specification manual

Adelaide
+61 8 8212 9733
Perth
+61 1300 794 654

Brisbane
+61 7 3368 3966
Sydney
+61 2 9669 6000

Darwin
+61 1300 663 225
Townsville
+61 7 4728 5711

Hobart
+61 1300 768 922
Auckland
+64 9 272 7010

Melbourne
+61 3 9646 3911
Kuala Lumpur
+60 3 7710 6514

Website: www.ecosol.com.au

Ecosol Pty Ltd ABN 86 059 012 243 Ecosol (NZ) Wastewater Filtration Systems Ltd (Reg. No AK/1172504)

Ecosol (UK) Wastewater Filtration Systems Ltd (Reg. No 4367214) Ecological Filtration Systems Sdn Bhd (Reg. No 651041-U)